



Lithuanian Art Museum

Aggregator of Lithuanian museums'
collections for
EuropeanaPhotography

Prepared by Giedre Asin Marco

20 000 objects, 34 museums

- 34 Lithuanian museums
 - 2 national museums (National M. K. Ciurlionis Art Museum and Lithuanian Art Museum)
 - 4 state museums (Siauliai 'Ausra' Museum, Maironis Lithuanian Literature Museum, etc.)
 - 16 local lore museums (16 districts)
 - 5 memorial museums
 - 5 thematic museums (music, literature, history)
 - From 15 to 3 000 photos from each museum

Different regions – different content



Photographic techniques

- **Negatives:** about 3 000 (mostly glass plate)
- **Prints:** 17 000
- **Daguerreotypes, ferrotypes, ambrotypes:** 95



19th century ~600 images

Beginning of the 20th century - 19 500 images

Great variety of types and themes

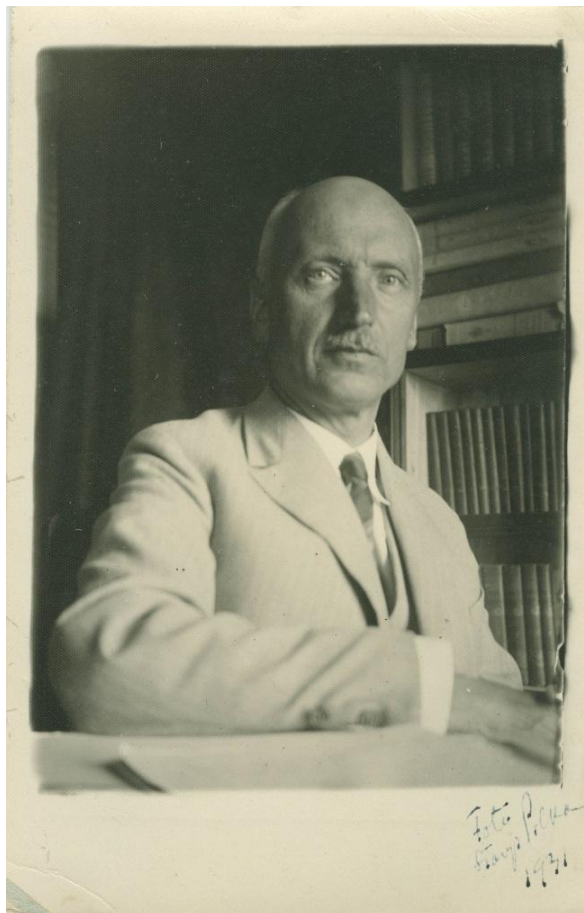
Portraits

more than 3 000 images

Nationally or locally famous people



Jurašaitis. Marija Šlapelienė with her daughters Laimutė and Gražutė. Vilnius, 1915 © Marija and Jurgis Šlapeliai House and Museum



Stasys Pilka. Antanas Vienuolis-Žukauskas. 1931 © Antanas Baranauskas and Antanas Vienuolis-Žukauskas Museum

Not identified people



Ferinauskas. Two woman. 1920s-1930s © Panevėžys Local Lore Museum

City life, architecture, monuments

more than 2 500 images



Mieziskiai village square. 1920s-1930s © Panevėžys Local Lore Museum



Kaunas at night. 1938 © Kupiškis Ethnographic Museum



Building of customs. 1917 © Tauragė Area Museum

Country landscapes

more than 700 images



Bajorunas. Landscape with Krekenava church. 1920s-1930s
© Panevėžys Local Lore Museum



Julius Miežlaiškis. Curonian Spit. 1920s-1930s
© M. K. Čiurlionis National Art Museum

7



Alytus bridge. 1931 © Kupiškis Ethnographic Museum

Historical events

more than 300 images



Flood in Kaunas. 1931 © Kupiškis Ethnographic Museum



Fire in the Kaunas State Theatre. 1931 © Kupiškis Ethnographic Museum



Celebration of the independence day on 16th February 1930 © Tauragė Area Museum

Lithuanian manor culture

Many museums, more than 2 000 images



Kossakowski and Krayevski. Ladies in Vaitkuski manor. 1896
© Ukmerge Local Lore Museum

Premises, surroundings,
residents, nobles,
servants, celebrations, etc.

12/04/2012



Rokiskis manor house. 1920s © Rokiskis Regional Museum



Jan Bulhak. Markuciai manor interior. Before 1935 © Alexander Pushkin
Literary Museum

Alexander Rackus collection of daguerreotypes, ferrotypes and ambrotypes

M. K. Čiurlionis National Art Museum



Oldest photo images owned by Lithuanian museums from the USA.

Mostly portraits of Lithuanian immigrants in the USA. Some of them identified.

85 objects

Unknown woman. Coloured ferrotype. The USA, 1860 ca. © M. K. Čiurlionis National Art Museum

Kossakowski photography albums

M. K. Čiurlionis National Art Museum, 500 images



Reflections of life in Vaitkuski manor (the end of the 19th century – beginning of the 20th). The photographer was the noble family member Stanisław Kazimierz Kossakowski.

Writers and cultural figures portraits

Maironis Lithuanian Literature Museum, about 1000 images



Poet Maironis. St. Peterburg. 1903



Writer Gabrielė Petkevičaitė-Bitė. Circa 1877.

Photos from Mikalojus Konstantinas Čiurlionis album Anapa, Caucasus, 1905

M. K. Čiurlionis National Art Museum



35 artistic images

The Šiauliai Regional Studies Society ethnographic archive (1927–1939)

Siauliai 'Ausra' Museum, 2 680 images



UNESCO National Memory
of the World Register in
Lithuania (2006)

Ethnography collection

M. K. Čiurlionis National Art Museum, more than 200 images



Images of traditional crafts, celebrations, folk art creators, etc. Taken during expeditions to various Lithuanian regions.

Other themes

- **Organizations, movements, entities** (about 1 700 images).
- **Culture**: theatre performances, musicians, first exhibitions of art, etc.
- **Education** (about 800 images).
- **Military service and police**: Lithuanian army and troops between the wars 1918–1939 (about 800 images).



© Nalsia Museum



© Alexander Pushkin Literature Museum

Some images and metadata are already available in virtual exhibitions
on the LM CID LIMIS centre website

<http://www.muziejai.lt/emuziejai/index.asp>

LITHUANIAN ART MUSEUM